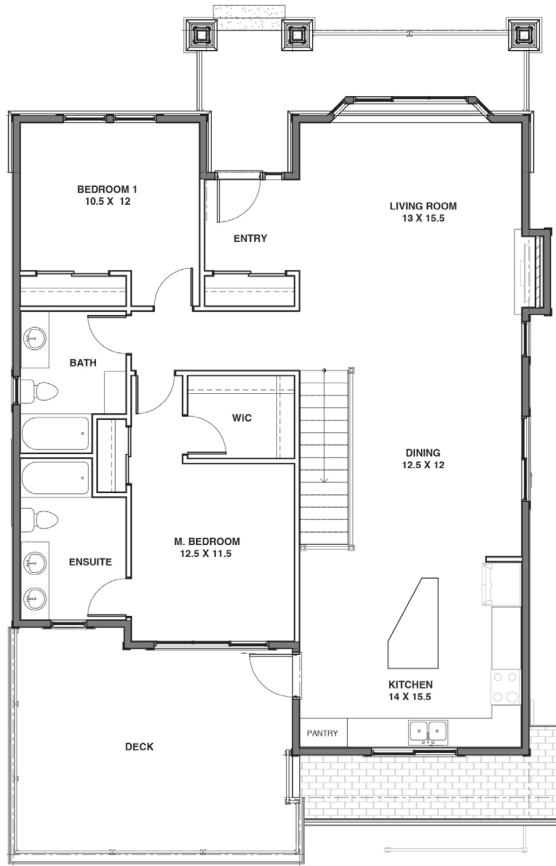
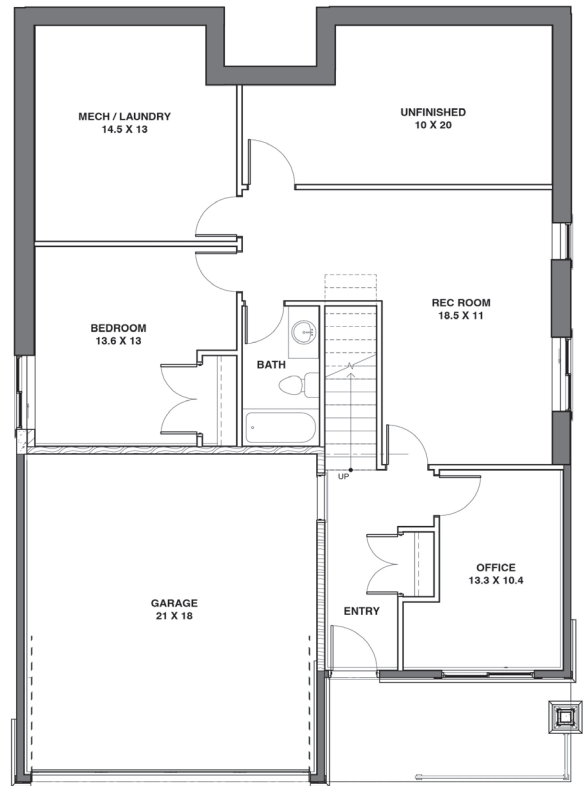




BASEMENT-ENTRY HOME
138-200 GRAND BLVD.
 3 BEDROOM | 3 BATH
 437 SQ.FT. GARAGE



main floor 1,460 SQ.FT.



basement 1,299 SQ.FT.



Mike Shannon 250.819.3324
 mikeshannon@royallepage.ca

In the interest of maintaining the standard of this project, Orchards Walk reserves the right to make modifications and changes without notice. Sizes and/or dimensions may vary from the actual survey. Measurements are approximate and should be verified.