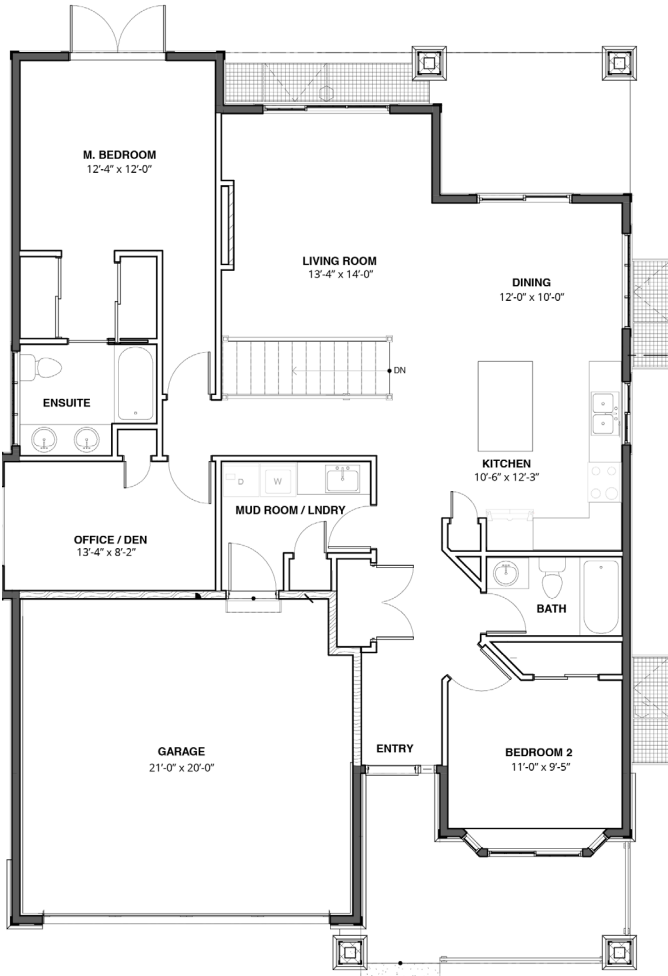
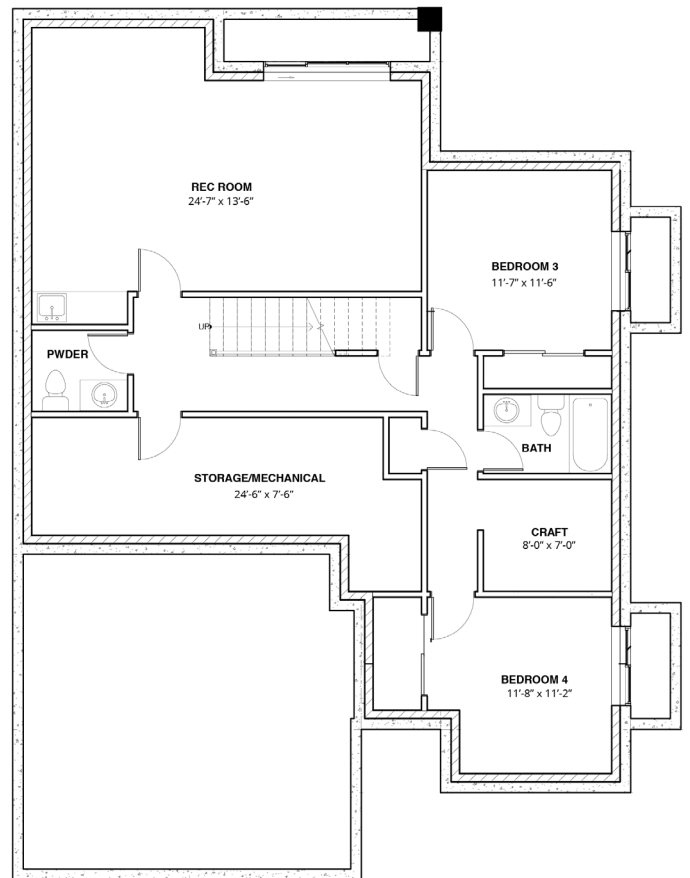




OPAL
158-200 GRAND BLVD.
 1,878 SQ.FT.
 4 BEDROOM | 3 BATH
 449 SQ.FT. GARAGE



main floor 1,429 SQ.FT.



basement 1,436 SQ.FT.



Mike Shannon 250.819.3324
 mikeshannon@royallepage.ca

In the interest of maintaining the standard of this project, Orchards Walk reserves the right to make modifications and changes without notice. Sizes and/or dimensions may vary from the actual survey. Measurements are approximate and should be verified.